
Risk Assessment

The following risk assessment has been undertaken with a view to identifying the sources of the hazards associated with the risk of contracting Covid -19 in the school. Newbridge Educate Together National School has appointed a Covid -19 Coordinator for the school as a primary control measure to fight the spread of the virus.

Hazard Identification

ID	Source of the Hazard	L	C	Risk Rating
1	Failure to wash your hands	4	4	16
2	Or Failure to use hand sanitiser	4	4	16
3	Working in location where infection has occurred and not taking precautionary measures	4	4	16
4	Maintaining contact with persons under 2 meters	3	4	12
5	Not keeping workstation and areas clean	4	3	12
6	Not adhering to specified protocols for the workplace	3	4	12
7	Not using PPE when required to do so	3	4	12

L =Likelihood, C = Consequence

Probability / Impact Grid

Level of Risk		Consequence				
		1	2	3	4	5
Likelihood	5	Medium	High	Extreme	Extreme	Extreme
	4	Medium	High	5	1,2,3	Extreme
	3	Medium	High	High	4,6,7	Extreme
	2	Low	7	High	High	High
	1	Low	Low	Medium	Medium	Medium

Steps to take to avoid contagion

- Wash hands properly and often, specifically before and after eating and after toilet use.
- Avoid shaking hands.
- Avoid touching eyes, nose or mouth.
- Use a handkerchief when coughing or sneezing. If required use your sleeve.
- Dispose of used tissues into a bin and wash hands.
- Use hand gel before entering the school and regularly throughout the day.
- Clean and disinfect frequently touched objects and surfaces.
- Avoid travelling to countries placed at high risk as listed on the HSE website.
- Avoid close contact with people who have returned from high risk countries.
- Avoid close contact with people who are not well.
- Notify the principle if you are feeling unwell.
- Self-isolate if you are ill to prevent the spreading of infection.

Other method to protect Contagion.

- Staff members must be situational aware and be conscious of the locations they have visited and any events where there was a large number of people.
- Teachers to maintain contact with all students on a regular basis and ensure they are adhering to the protocols.
- Ensure to inform the principle if you or anyone you have come into contact with has developed the systems.
- Under no circumstances are you to shake hands with any person regardless of the situation. Brief parents on protocols if the requirement arises.
- If you think you have systems please notify your Doctor, please follow their instruction.
- The principle is cognisant of the following high-risk categories. Employees over 60 years of age and those with an underlining medical condition.

PPE to be used where appropriate

Gloves, Face Coverings, Hand Sanitizers and Disinfectants (Bleach-Dettol-or Other Wipes)

Additional Measures

All teaching staff at the school are responsible for their own personal safety during this pandemic and are required to take a professional approach to the implementation of Government lead guidelines. In addition, they will be required to manage students within their care and be observant of all persons in the school to ensure that social distancing is being observed, the washing of hands and sneezing protocols are being followed and that the school is implementing Covid -19 control measures effectively.

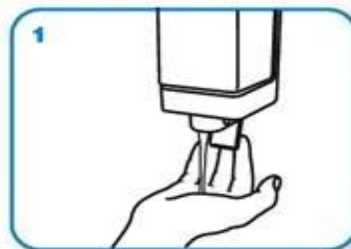
Additional information



How to wash your hands properly



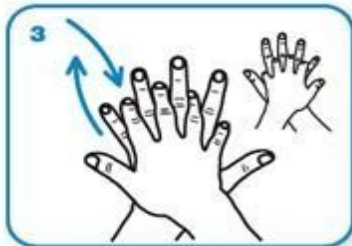
Wet hands with water



apply enough soap to cover all hand surfaces.



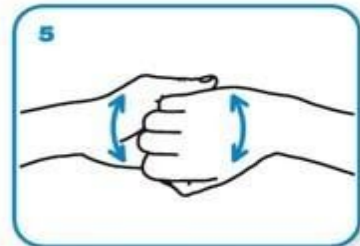
Rub hands palm to palm



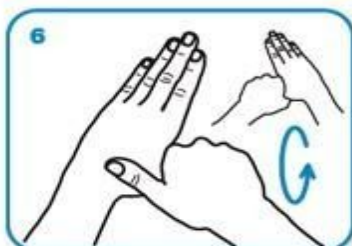
right palm over left dorsum with interlaced fingers and vice versa



palm to palm with fingers interlaced



backs of fingers to opposing palms with fingers interlocked



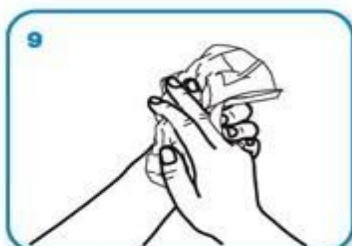
rotational rubbing of left thumb clasped in right palm and vice versa



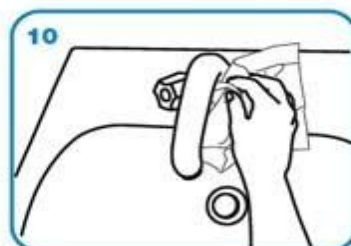
rotational rubbing, backwards and forwards with clasped fingers of right hand in left palm and vice versa.



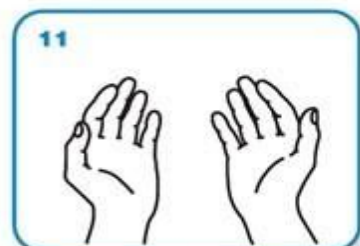
Rinse hands with water



dry thoroughly with a single use towel



use towel to turn off faucet



...and your hands are safe.

Symptoms

Coronavirus

Symptoms range from mild to severe

Cold

Gradual onset of symptoms

Flu

Abrupt onset of symptoms

 Fever	Common	Rare	Common
 Fatigue	Sometimes	Sometimes	Common
 Cough	Common* (usually dry)	Mild	Common* (usually dry)
 Sneezing	No	Common	No
 Aches and pains	Sometimes	Common	Common
 Runny or stuffy nose	Rare	Common	Sometimes
 Sore throat	Sometimes	Common	Sometimes
 Diarrhea	Rare	No	Sometimes for children
 Headaches	Sometimes	Rare	Common
 Shortness of breath	Sometimes	No	No

Sources: World Health Organization, Centers for Disease Control and Prevention